

STK11(P281L)

Catalog Number: 26158

Gene Symbol: STK11, LKB1, PJS, hLKB1

Description: Anti-STK11 Mouse Monoclonal Antibody

Background: Serine/threonine kinase 11 (STK11) also known as liver kinase B1 (LKB1) or renal carcinoma antigen NY-REN-19 is a kinase that controls the activity of AMP-activated protein kinase (AMPK) family members, thereby playing a role in various processes such as cell metabolism, cell polarity, apoptosis and DNA damage response, and functions as a tumor suppressor. Recent studies have uncovered a large number of somatic mutations of the STK11 gene that are present in lung, cervical, breast, intestinal, testicular, pancreatic and skin cancer.

Immunogen: A synthetic peptide from the internal region of STK, which includes the mutation of P281L, human origin.

Tested Applications: ELISA, WB, IHC

Recommended Dilutions:

ELISA: 1:1000-1:5000

WB: 1:100-1:1000

IHC: 1:50-1:200

Concentration: 0.5 mg/ml

Host: Mouse

Clonality: Monoclonal

Purity: Purified from ascites

Format: Liquid

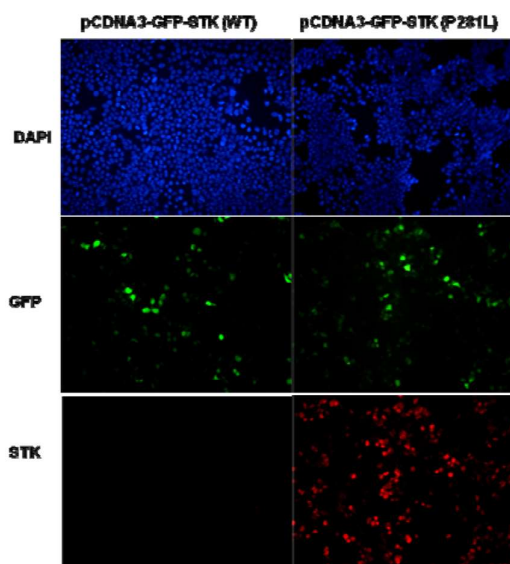
Preservative: No

Constituents: PBS (without Mg²⁺ and Ca²⁺), pH 7.4, 150 mM NaCl, 50% glycerol

Species Reactivity: Recognizes P281L mutated, but not wild-type STK11 of vertebrates.

Storage Conditions: Store at -20°C. Avoid freeze / thaw cycles

Immunofluorescence:



Immunofluorescence of cells expressing STK11 proteins with anti-STK11 (P281L) antibody.

HEK293T cells were transfected with pCDNA3-GFP-STK11 (WT) plasmid (left column) or pCDNA3-GFP-STK11 (P281L) plasmid (right column), then fixed and stained with anti-STK11 (P281L) monoclonal antibody (Cat. # 26158).

FOR RESEARCH USE ONLY. NOT FOR DIAGNOSTIC APPLICATIONS